

Model Number: XX1TM4-T, 0X1OM4-T
X1932-T

Tools:



Adjustable Wrench Plumbers Putty Teflon Tape Rags

Warnings and Notes:

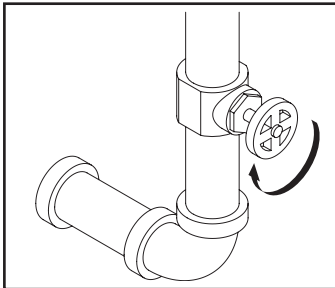
Check with local plumbing code requirements before installation.
This product should be installed by a local listed plumber.

Do not use plumbers putty on threads.

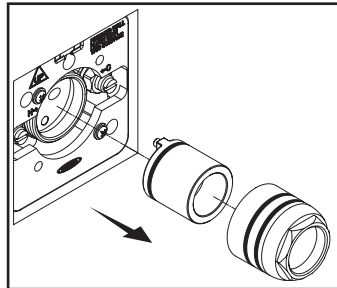


Installation Steps:

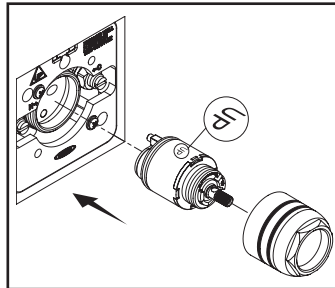
Single Handle Tub / Shower Trim Set



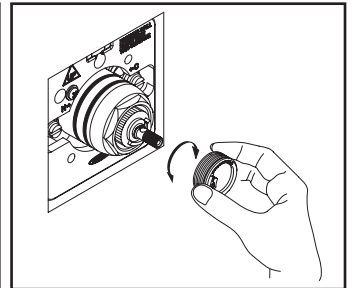
(1) Turn off water supply.



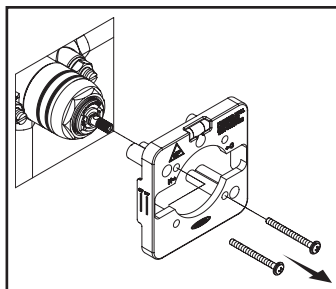
(2) Remove sleeve nut and test cap.



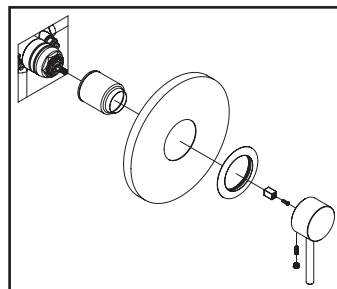
(3) Make sure "UP" marking is on top, install the cartridge and hand tighten the sleeve nut. Then tighten the sleeve nut a quarter turn more by using a wrench or a 1-7/16" socket to secure the cartridge.



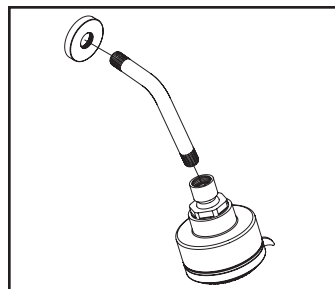
(4) With cartridge in off position; lift and adjust temperature limit cap to desired temperature, turn clockwise to decrease the temperature setting and turn counter-clockwise to increase the temperature setting.



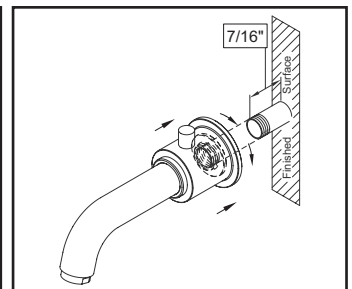
(5) Remove mud guard.



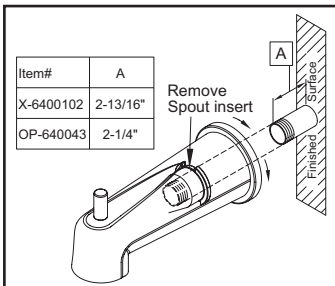
(6) Secure face plate by using silicon to caulk around edge of face plate.



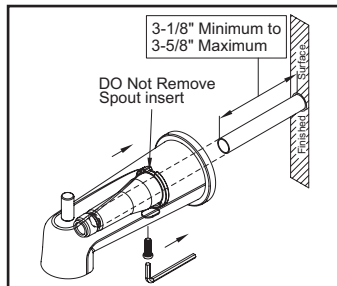
(7) Apply Teflon tape on both thread ends of the shower arm and install shower arm and shower head.



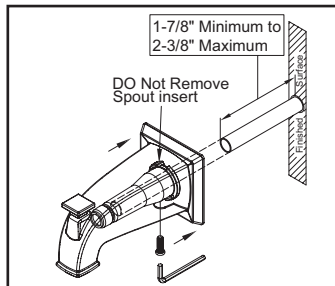
(8) The pipe thread nipple must be kept with a length of 7/16" from finished wall, apply Teflon tape on the thread end of nipple and install diverter tub spout.



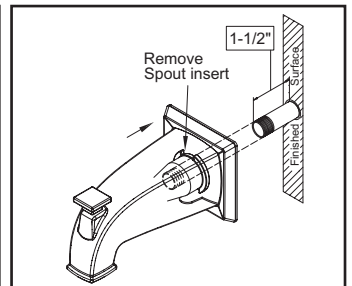
(9) For pipe thread nipple, remove spout insert and apply Teflon tape on the thread end of nipple, please see the distance charts on the installation instruction pictures for correct installation for each series of tub spout.



(10) For copper pipe, refer the Min. and Max. of installation distance to install tub spout.

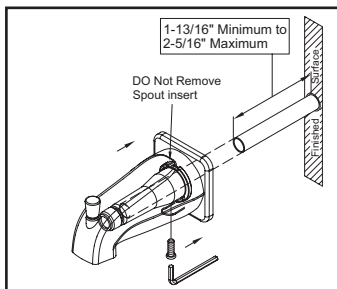


(11) For copper pipe, refer the Min. and Max. of installation distance to install diverter tub spout.

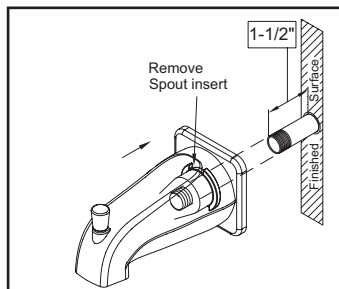


(12) The pipe thread nipple must be kept with a length of 1-1/2" from finished wall, apply Teflon tape on the thread end of nipple and install diverter tub spout.

Model Number: XX1TM4-T, 0X1OM4-T
X1932-T



(13) For copper pipe, refer the Min. and Max. of installation distance to install diverter tub spout.



(14) The pipe thread nipple must be kept with a length of 1-1/2" from finished wall, apply Teflon tape on the thread end of nipple and install diverter tub spout.

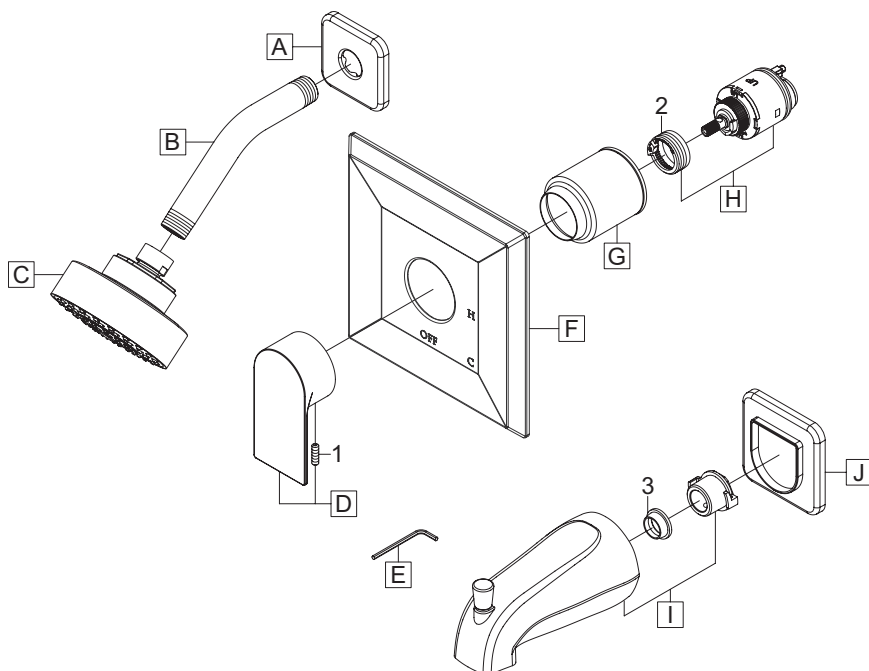
EXPLODED DRAWING

Model Number: X1932-T

* Note: Please specify finish/color when ordering.

	ITEM #	DESCRIPTION
1	OP-440043	Allen Screw
2	OP-340010	Red Color Temperature Adjusting Ring
3	OP-640058	Gasket

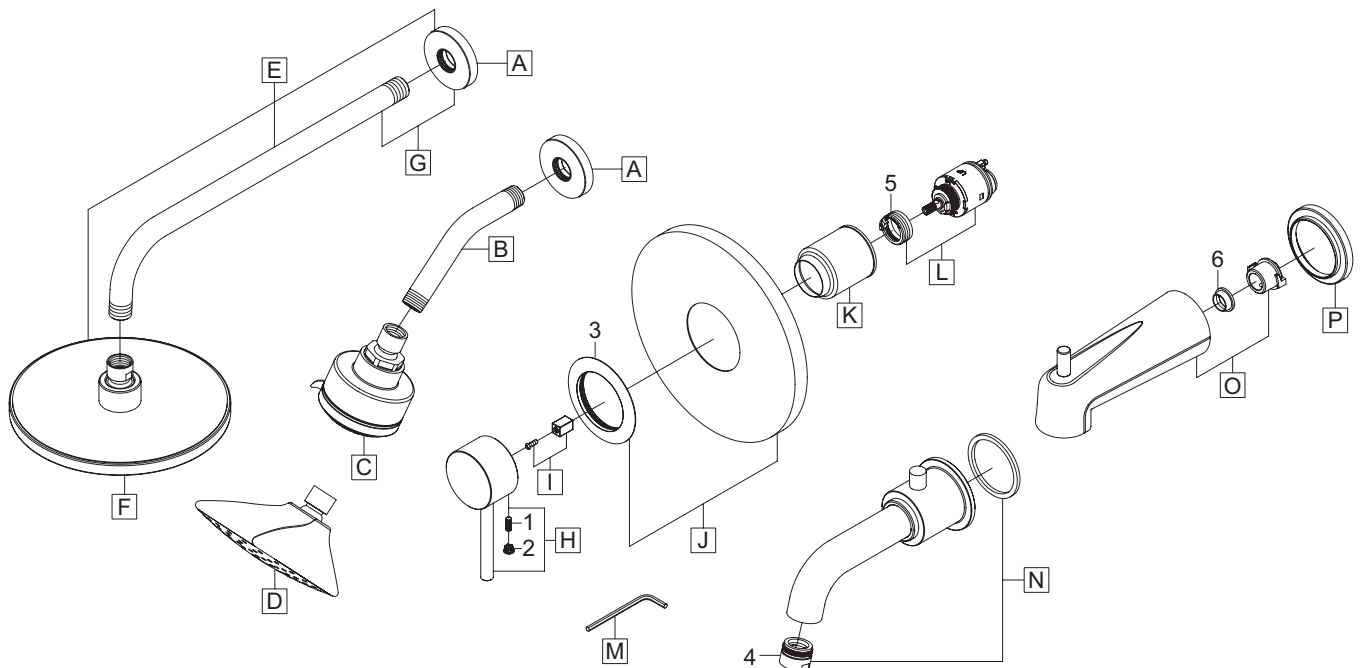
	ITEM #	DESCRIPTION
A	OP-640045*	Shower Arm Flange
B	OP-640002*	Shower Arm
C	OP-640038*	1.75 GPM Shower Head
D	OP-140021*	Lever Handle
E	OP-490011	3/32" Allen Wrench
F	X-6400064*	Face Plate
G	OP-440054*	Sleeve
H	OP-340009	Ceramic Cartridge & Spool
I	OP-640007*	Diverter Tub Spout (For 01932-T)
J	OP-440055*	Spout Escutcheon (For 01932-T)



* Note: Please specify finish/color when ordering.

ITEM #	DESCRIPTION
L	OP-340009 Ceramic Cartridge & Spool
M	X-4900024 3/32" Allen Wrench
N	X-6400051* Diverter Tub Spout (For 011TM4-T, 511TM4-T)
O	X-6400102* 7" Extended Diverter Tub Spout (For 111TM4-T)
P	X-4400105* Escutcheon (For 111TM4-T)
1	X-4900080 3/32" Allen Screw
2	X-4900044* Hole Cover
3	X-4400045* Face Plate Flange
4	X-4400042* Flow Streamer
5	OP-340010 Red Color Temperature Adjusting Ring
6	OP-640058 Gasket

ITEM #	DESCRIPTION
A	X-6400011* Shower Arm Flange
B	X-6400002* Shower Arm
C	X-6400095* 1.75 GPM Shower Head (For 011TM4-T, 111TM4-T)
D	X-6400083* 1.75 GPM Shower Head (For 131TM4-T)
E	X-6400038* Single Function Rain Showerhead W/Shower Arm and Flange (For 511TM4-T)
F	X-6400108* 1.75 GPM Shower Head (For 511TM4-T)
G	X-6400013 14" L Shower Arm and Shower Arm Flange (For 511TM4-T)
H	X-1400028* Motegi Handle
I	X-4400116 Handle Adapter
J	X-4400043* Face Plate
K	OP-440054* Sleeve



Model Number: 0X10M4-T

* Note: Please specify finish/color when ordering.

ITEM #	DESCRIPTION
J	OP-440054* Sleeve
K	OP-340009 Ceramic Cartridge & Spool
L	X-4900024 Allen Wrench
M	X-6400086* 1/2" Combo Diverter Tub Spout (For 0010M4-T)
N	OP-640043 7" Extended Diverter Tub Spout (For 011TM4-T)
O	OP-440055 Spout Escutcheon (For 011TM4-T)
1	X-4900080 Allen Screw
3	OP-340010 Red Color Temperature Adjusting Ring
4	OP-640058 Gasket

ITEM #	DESCRIPTION
A	X-6400088* 1.75 GPM Shower Head (For 0010M4-T)
B	X-6400104* Shower Arm (For 0010M4-T)
C	X-6400103* Shower Arm Flange (For 0010M4-T)
D	OP-640042* 1.75 GPM Shower Head (For 011TM4-T)
E	X-6400002* Shower Arm (For 011TM4-T)
F	OP-640045* Shower Arm Flange (For 011TM4-T)
G	X-1400043* Metal Lever Handle
H	X-4400116 Handle Adapter
I	X-6400064* Face Plate

