

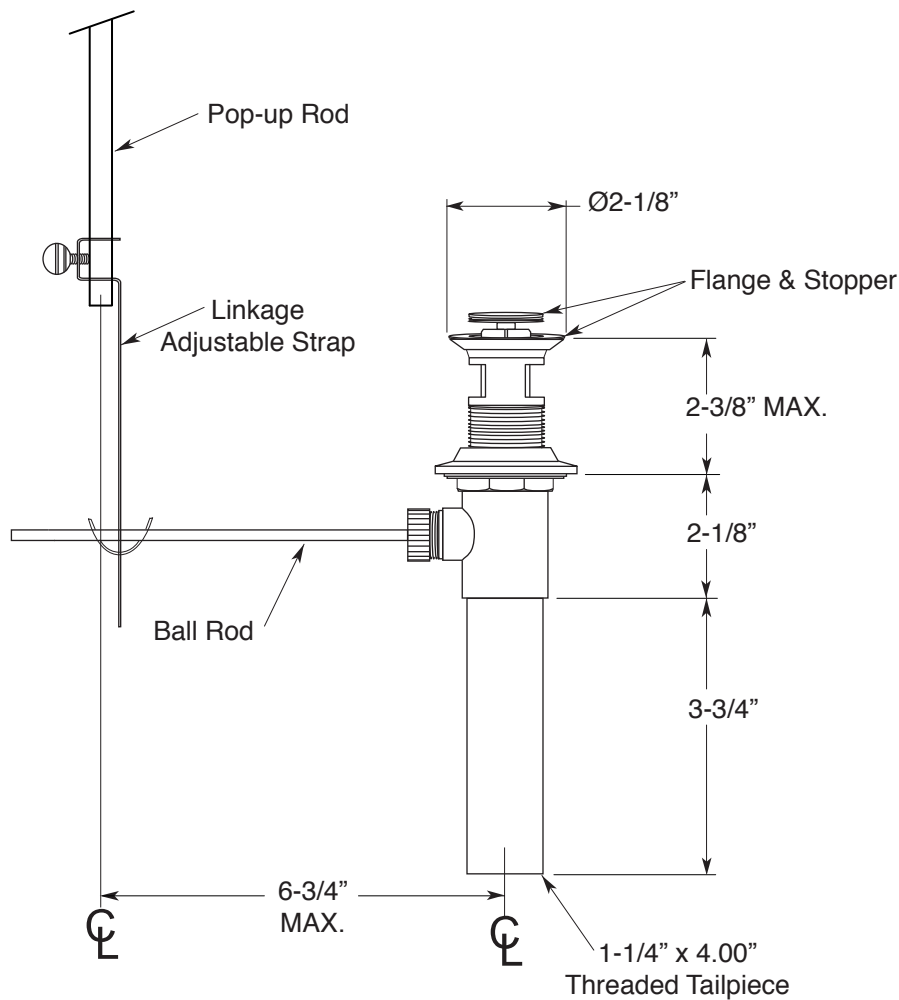
FEATURES:

- All brass construction.
- Fits 1-1/2" hole. 1-1/4" x 8" with overflow holes.
- Flange and stopper are finished only.
- Extended ball rod 14" long available: P/N: APS.11.019
- Available in all finishes.
- Certified to meet or exceed the following codes and standards:
ASME A112.18.1/CSAB 125.1-2011

APS
American Plumbing Specialties

**Lavatory Pop-Up Drain
Assembly with Overflow Holes**

18.11.041



Note: Measurements are subject to change or cancellation. No responsibility is assumed for use of superseded or voided pages.