





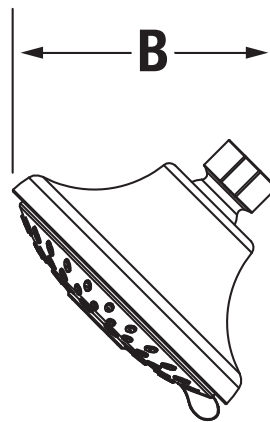
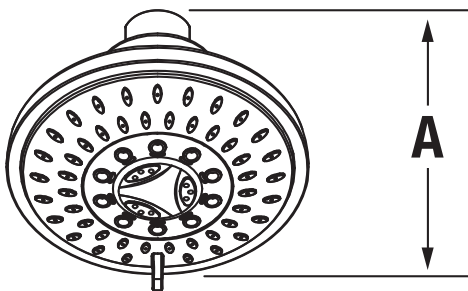
552SH  
5 Showerhead  
**Operation & Maintenance Manual**

Model Number	Specification
<input type="checkbox"/> <b>552SH</b> <i>5 Mode Showerhead</i>	<ul style="list-style-type: none"> <li>• 5 mode showerhead</li> <li>• 4" diameter</li> <li>• 2.5 gpm (9.5 L/min) standard flow restrictor</li> <li>• Showerhead plated in standard polished chrome finish</li> </ul>
Modifications	Compliance
<input type="checkbox"/> <b>-1.5</b> <b>CG</b> <i>1.5 gpm (5.7 L/min) flow restrictor</i> <input type="checkbox"/> <b>-2.0</b> <i>2.0 gpm (7.6 L/min) flow restrictor</i> <input type="checkbox"/> <b>-SBZ</b> <i>Seasoned Bronze finish</i> <input type="checkbox"/> <b>-STN</b> <i>Satin Nickel finish</i>	<ul style="list-style-type: none"> <li>- ASME A112.18.1/CSA B125.1</li> <li>- WaterSense 1.5 gpm, 2.0 gpm</li> </ul>  
	<p><b>Warranty</b></p> <p><b>Limited Lifetime</b> - to the original end purchaser in consumer installations.  <b>5 Years</b> - for commercial installations.  Refer to <a href="http://www.symmons.com/warranty">www.symmons.com/warranty</a> for complete warranty information.</p>

**Note:** Append appropriate -suffix to model number.

**Dimensions**

Measurements	
A	3-7/8", 98 mm
B	3-5/8", 92 mm



**Note:** Dimensions subject to change without notice.

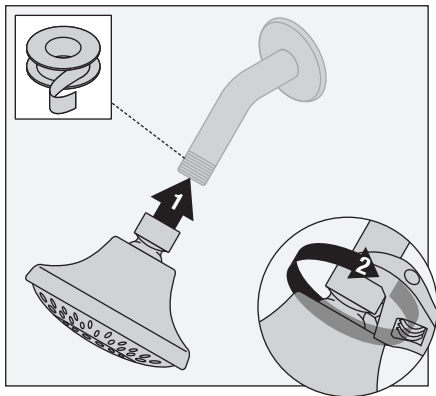
## Installation

### Tools Required for Installation

Plumber Tape

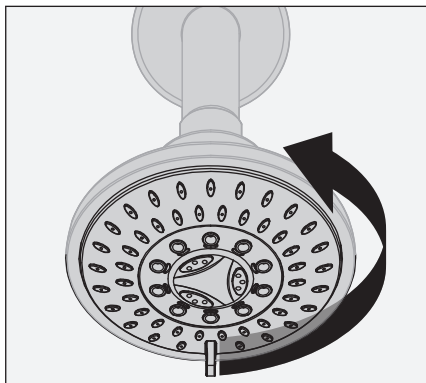


- 1) Install showerhead to shower arm (not included) turning clockwise to tighten.



## Operation

- 1) Turn showerhead to desired mode of operation.



## Troubleshooting Chart

Problem	Cause	Solution
Finish is spotting.	Elements in water supply may cause water staining on finish.	Clean finished trim area with a soft cloth using mild soap and water or a non-abrasive cleaner and then quickly rinse with water.
Showerhead is leaking from shower arm when valve is in "on" position.	Coupling connecting showerhead to shower arm is cracked.	Inspect coupling and replace showerhead if necessary.