

## Keane® Single-Handle Lavatory Faucet

### FEATURES

- WaterSense® certified low-flow 1.5 gpm (5.7 lpm) faucet
- Lever handle
- Brass construction
- Ceramic disk mixing cartridge
- Metal pop-up drain assembly included
- Pivoting aerator

### COLORS/FINISHES

- #CP Polished Chrome
- #BN Brushed Nickel



### OPTIONAL ACCESSORIES

- THP3158#CP – 4" Cover Plate
- THP3159#CP – 8" Cover Plate

### PRODUCT SPECIFICATION

Product shall have a maximum flow rate of 1.5 gpm (5.7 lpm). Product shall have lever handles. Product shall have a brass construction. Product shall have a ceramic disk mixing cartridges. Product shall include metal pop-up drain assembly. Product shall have a pivoting aerator. Product shall be TOTO Model TL211SDR#\_\_\_\_\_.

### CODES/STANDARDS

- Meets or exceeds ASME A112.18.1/CSA B125.1, NSF/ANSI/CAN 61-9, NSF/ANSI/CAN 372
- Certifications: IAPMO(cUPC), EPA WaterSense, State of Massachusetts and others
- Code Compliance: UPC, IPC, NSPC, DoE, NPC Canada, and others
- Complies with federal and state requirements for low-lead legislation
- ADA compliant
- Complies with CA Prop 65 warning requirements
- Meets or exceeds California AB100 Law that requires lead content less than 1ppb

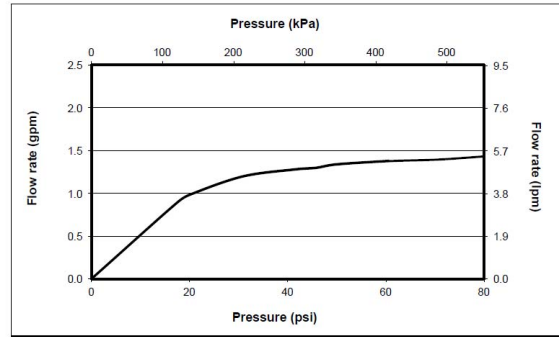


# TL211SDR

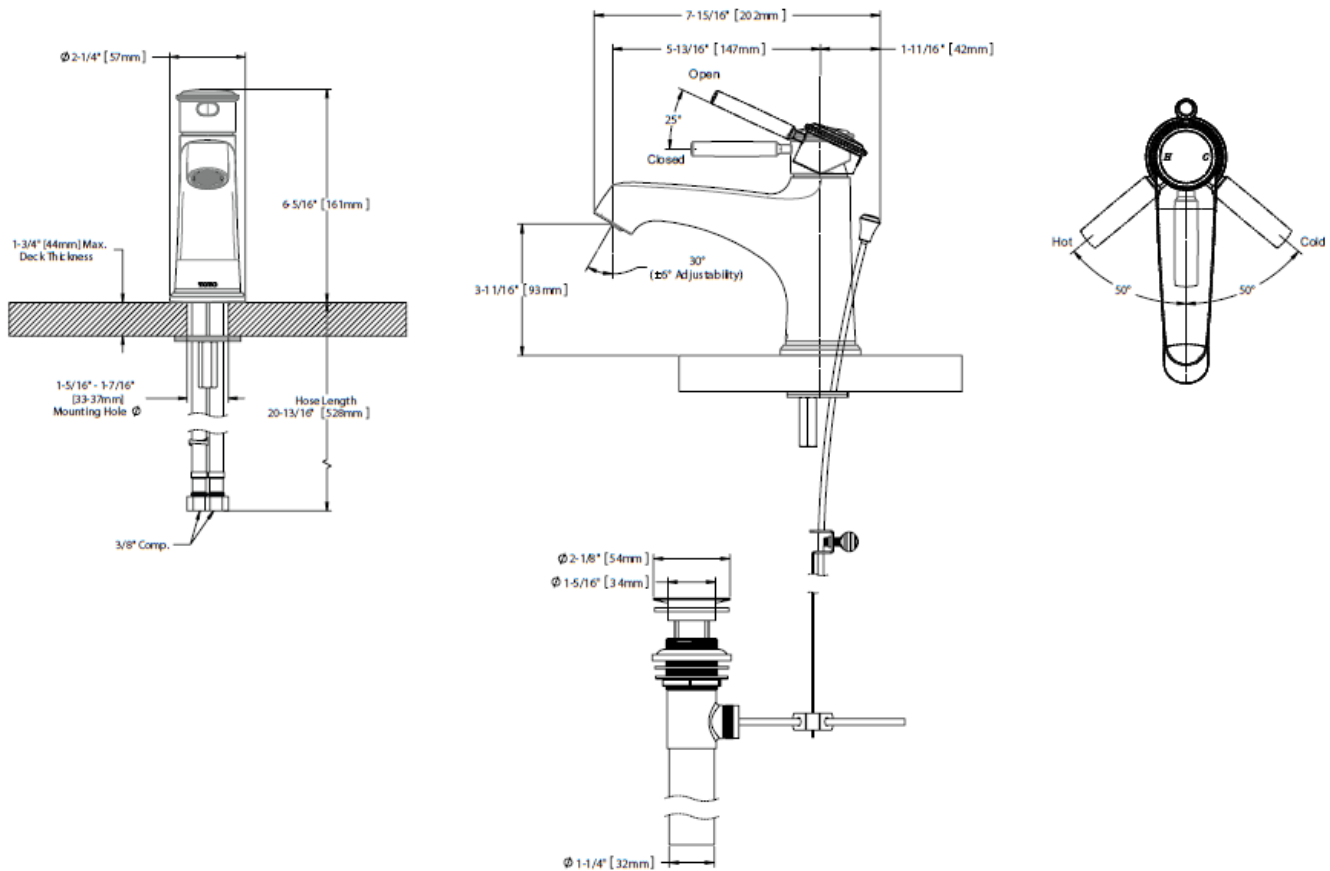
## Keane® Single-Handle Lavatory Faucet

### SPECIFICATIONS

<b>Material</b>	Brass
<b>Maximum Flow Rate</b>	1.5gpm (5.7lpm)
<b>Warranty</b>	Lifetime Limited Warranty (Residential Use) One Year (Commercial Use)
<b>Shipping Weight</b>	5.0 lbs
<b>Shipping Dimensions</b>	15" L x 7-3/4" W x 3" H



### DIMENSIONS



**TOTO®**

*These dimensions and specifications are subject to change without notice*