

INSTALLATION INSTRUCTIONS

PIXELS CCT SELECT LED LIGHT SHEETS

LED-P05-1224-2750, LED-P10-1224-2750

WAC LIGHTING

Responsible Lighting®

CAUTION: To prevent electrical shock, ensure electricity has been turned off at the circuit breaker before beginning.

- Read all instructions before installing.
- System is intended for installation by a licensed electrician in accordance with the National Electrical Code (NEC) and local regulations.
- When handling the fixture, do not apply pressure to the LEDs. Hold the fixture by the base only.
- **PIXELS CONFIGURABLE LED LIGHT SHEETS** have polarity for connection.

WARNING: All parts must be used as indicated in these instructions. This product is designed for use only with the supplied parts and/or accessories designated for use by WAC Lighting. Substitution of parts or accessories not designated for use with this product by WAC Lighting could result in personal injury or property damage and will void the warranty. Contact an authorized dealer or the manufacturer if any parts are damaged or missing.

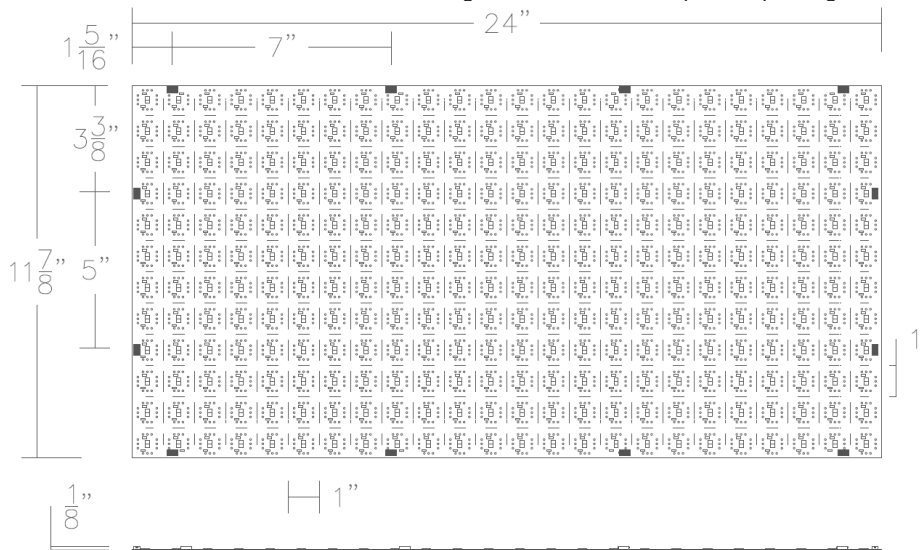
MISE EN GARDE: Pour éviter tout choc électrique, assurez-vous que le disjoncteur soit mis hors tension avant de commencer.

- Lisez toutes les instructions avant l'installation.
- Le système doit être installé par un électricien licencié conformément au code national de l'électricité (NEC), et également aux règlements locaux.
- Lors de la manipulation du luminaire, n'appuyez pas sur les LED. Tenez-le uniquement par la base.
- **PIXELS CONFIGURABLE LED LIGHT SHEETS** ont une polarité pour la connexion.

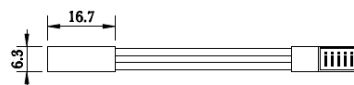
ATTENTION: Toutes les pièces doivent être utilisées comme indiqué dans ces instructions. Ce produit est conçu pour être utilisé seulement avec les pièces et/ou accessoires fournis pour être utilisés avec les produits WAC Lighting. Remplacer des pièces ou accessoires non conçus pour ce produit WAC Lighting pourrait causer des dommages corporels ou matériels et pourrait également causer l'annulation de la garantie. Veuillez contacter un revendeur autorisé ou le fabricant si des pièces manquent ou sont endommagées.

PIXELS CCT SELECT LED LIGHT SHEETS

Determine the installation area and material. Different mounting accessories will be required depending on the mounting materials.



ACCESSORIES



2 inches Pixels to Pixels connector

Qty: 1pc

wacighting.com
Phone (800) 526.2588
Fax (800) 526.2585

Headquarters/Eastern Distribution Center
44 Harbor Park Drive
Port Washington, NY 11050

Central Distribution Center
1600 Distribution Ct
Lithia Springs, GA 30122

Western Distribution Center
1750 Archibald Ave
Ontario, CA 91761

INSTALLATION INSTRUCTIONS PIXELS CCT SELECT LED LIGHT SHEETS

LED-P05-1224-2750, LED-P10-1224-2750

WAC LIGHTING
Responsible Lighting®

WIRING AND INSTALLATION

Determine the number of separately powered runs needed. Calculate the number of power supplies.

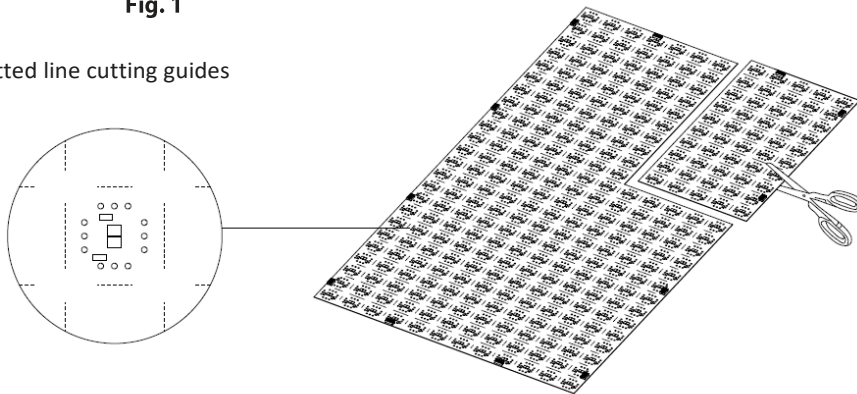
Min./max run length	1 pixel / 20 sqft per 96W power supply @ 500 lm/sqft 1 pixel / 10 sqft per 96W power supply @ 1000 lm/sqft
Current	417 mA/sheet @ 500 lm/sqft 833 mA/sheet @ 1000lm/sqft
Power consumption	5 W/sqft @ 500 lm/sqft 10 W/sqft @ 1000 lm/sqft
Input voltage	24V DC

INSTALLATION

- Measure the area of each run and round it off to the nearest 1 square inch interval.
 - Determine the necessary quantities of PIXELS.
 - Measure the distance between the runs in order to determine the length of extension feed wires.
1. Follow the dotted line cutting guides and cut the PIXELS to desired size. PIXELS is field cuttable vertically or horizontally anywhere to single pixel increment (**Fig.1**). PIXELS is flexible and is adaptable for flat or curved surfaces.

Fig. 1

Dotted line cutting guides



NOTE: The included 3M adhesive is sufficient in most applications for smooth surfaces (**Fig. 2**). If mounting surface is a porous or textured surface, a staple gun or nails may be required to secure the PIXELS after wiring (**Fig. 3**).

Fig. 2

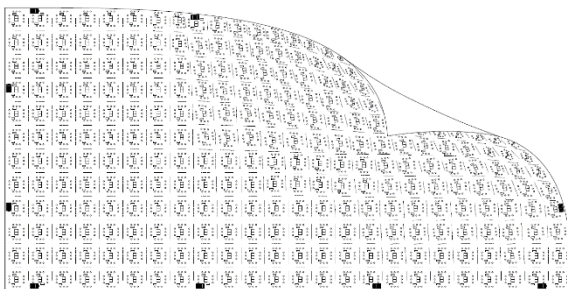
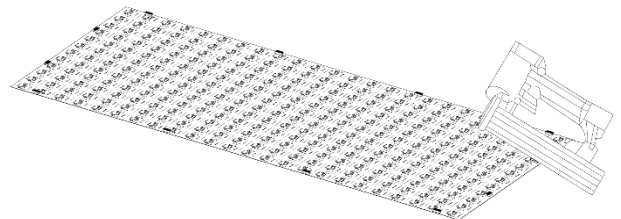


Fig. 3



wacighting.com
Phone (800) 526.2588
Fax (800) 526.2585

Headquarters/Eastern Distribution Center
44 Harbor Park Drive
Port Washington, NY 11050

Central Distribution Center
1600 Distribution Ct
Lithia Springs, GA 30122

Western Distribution Center
1750 Archibald Ave
Ontario, CA 91761

INSTALLATION INSTRUCTIONS

PIXLES CCT SELECT LED LIGHT SHEETS

LED-P05-1224-2750, LED-P10-1224-2750

WAC LIGHTING
Responsible Lighting®

WIRING

CAUTION: Power supply must be installed away from heat sources and accessible for service.

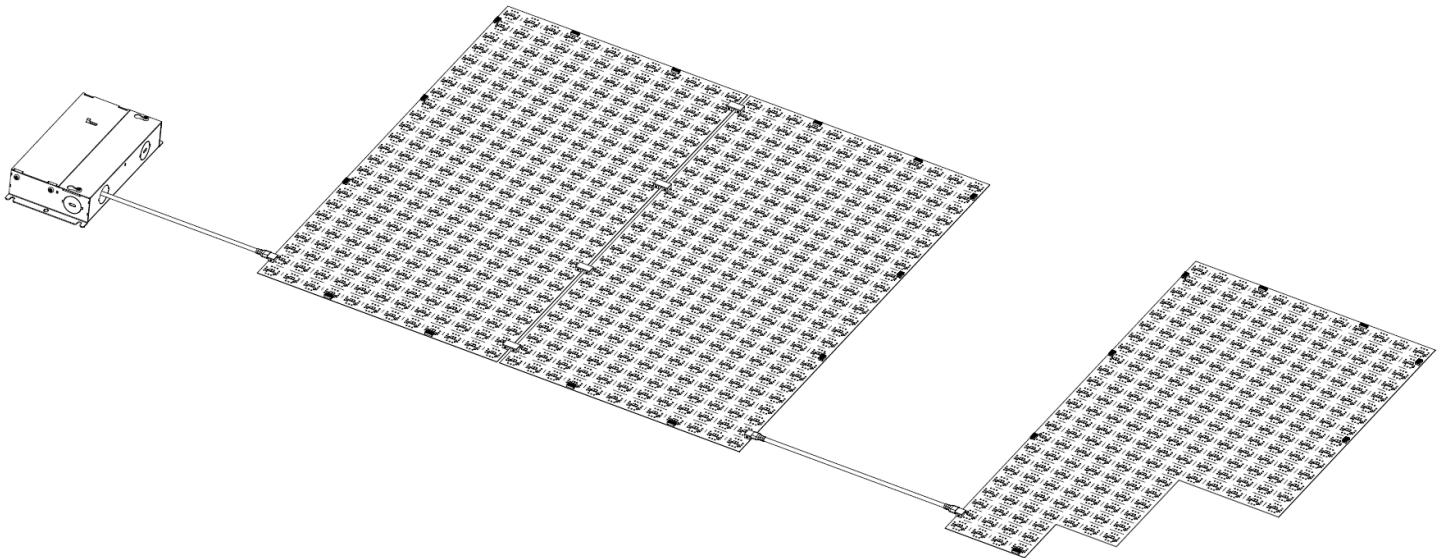
NOTE: Enclosed power supply is UL listed. The power supply box has a separate line voltage, and low voltage wiring compartments. Trade size knockout is provided on both compartments.

1. Connect building wires to like-color power supply wires with wire nuts. Building ground wire may be green or uninsulated, and attaches to the green wire from power supply box.
2. Connect the output lead wire of the power supply with the connector on the PIXELS sheets.
3. Connect between PIXELS with included 2 inches lead connector. Longer 6 inches lead is sold separately.

NOTE: Connector can be connected from any directions. No polarity concerns with connector.

NOTE: 12 onboard connectors are included per sheet, the cut sections without connectors can also be powered with wires soldered in the field with the pads around every LED chip (**Fig. 4**).

Fig. 4



wacighting.com
Phone (800) 526.2588
Fax (800) 526.2585

Headquarters/Eastern Distribution Center
44 Harbor Park Drive
Port Washington, NY 11050

Central Distribution Center
1600 Distribution Ct
Lithia Springs, GA 30122

Western Distribution Center
1750 Archibald Ave
Ontario, CA 91761